

NORTH 1/4 COR SEC 7, T18N, R66W 062656

RECEIVED
LARAMIE COUNTY
CHEYENNE, WY.

CERTIFIED LAND CORNER RECORDATION

OCT 5 PM 3 02

DESCRIPTION OF CORNER EVIDENCE FOUND, AND ORIGINAL RECORD (If known)

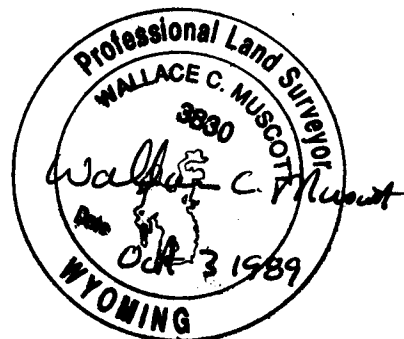
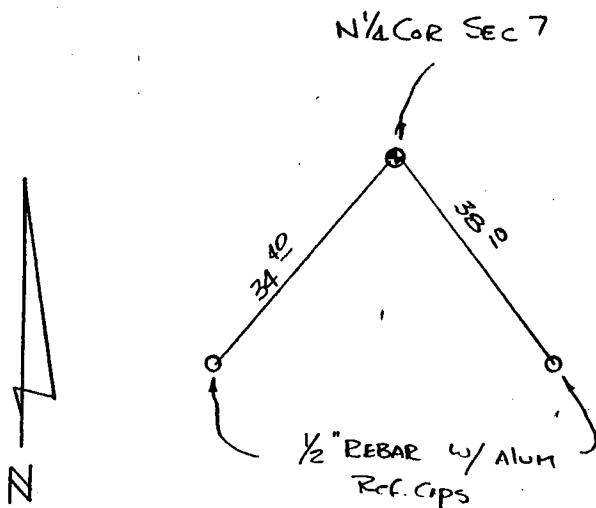
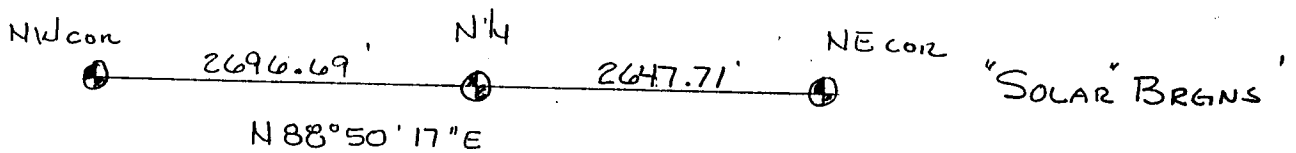
AFTER A THOROUGH SEARCH, NO EVIDENCE OF THE ORIGINAL CORNER WAS FOUND. CONSIDERED THE CORNER LOST AND SET BY SINGLE PRO. RATE. THE ORIGINAL BLM NOTES CALL FOR A 20X8X4 LIMBSTONE.

DESCRIPTION OF MONUMENT AND ACCESSORIES ESTABLISHED TO PERPETUATE THE ORIGINAL LOCATION OF THIS CORNER:

SET A 5/8" X 30" REBAR W/ CORPS OF ENGINEERS BRASS CAP AT CALCULATED CORNER.

JULY 10, 1989

SKETCH, WITH COURSE AND DISTANCE TO ADJACENT CORNER IF DETERMINED IN THIS SURVEY. (May Sketch or Paste Reproduction on Reverse Side.)



I, Wallace C. Muscott certify that I have carefully performed or reviewed the work done on the diagrammed corner as reported on this recordation form and approve the same.

Wallace C. Muscott
Signature of Surveyor

3830
Registration No.

STATE OF WYOMING,
Office of Clerk and Recorder,
County of _____

This "corner record" was filed for record on the _____ day of _____, 19____, was noted on the cross-index plat and is assigned page No. _____, in book No. _____.

County Official			
Cross Index No. <u>E-3</u>	T. <u>18N</u>	R. <u>66W</u>	Mer.
_____	T. _____	R. _____	Mer.
_____	T. _____	R. _____	Mer.
_____	T. _____	R. _____	Mer.
_____	T. _____	R. _____	Mer.
_____	T. _____	R. _____	Mer.
_____	T. _____	R. _____	Mer.